

The Welsh House

By Thomas Calamia
Photography by Dustin Peck
Home Plan Design by Jim Phelps





When a representative from the bucolic development of Cheval, located in Mint Hill, approached Mary Ludemann about building and decorating a home for their annual HomeArama event in 2015, she jumped at the chance.

As co-founder of New Old with her husband, Troy Ludemann, Mary has worked hard to meld their signature character-driven architecture with her impeccable taste in modern, approachable interior design. For this project, she was certain that her love of British style would be the perfect aesthetic for this show house, the Welsh House.

Nestled inside the pretty pastoral neighborhood, the house mimics the classic country homes from the English countryside, but easily incorporates American architectural elements. The exterior features European-styled diagonal boards, while a path on the side of the home leads to the backyard pergola and garden. The result is a luxurious but comfortable aesthetic.

“The goal was to create a space that was upscale but that also felt familiar and timeworn,” explains Mary Ludemann. “Truly, the home was inspired by a British country home with the casual sophistication reflective of the British countryside. It’s that classic design with a twist for which we’re known.”

Stepping inside, the blend of rustic and modern designs is immediately relatable and unique. Oak hardwood floors and classic furnishings were all designed with style and durability in mind.

“I kept a young and growing family as inspiration, but because this is an iconic, finely



detailed style of design that deftly blends both city and countryside life, it has broad appeal – equally captivating to multiple generations,” says Ludemann.

The kitchen, with its mix of sleek and modern appliances, including a classic cast iron AGA range, combines seamlessly with worn bar stools and marble hardtop island, all of which accent Ludemann’s overarching theme of timeless style meets function. The walk-in pantry gives a nod to a seemingly bygone era of simpler times and family togetherness.

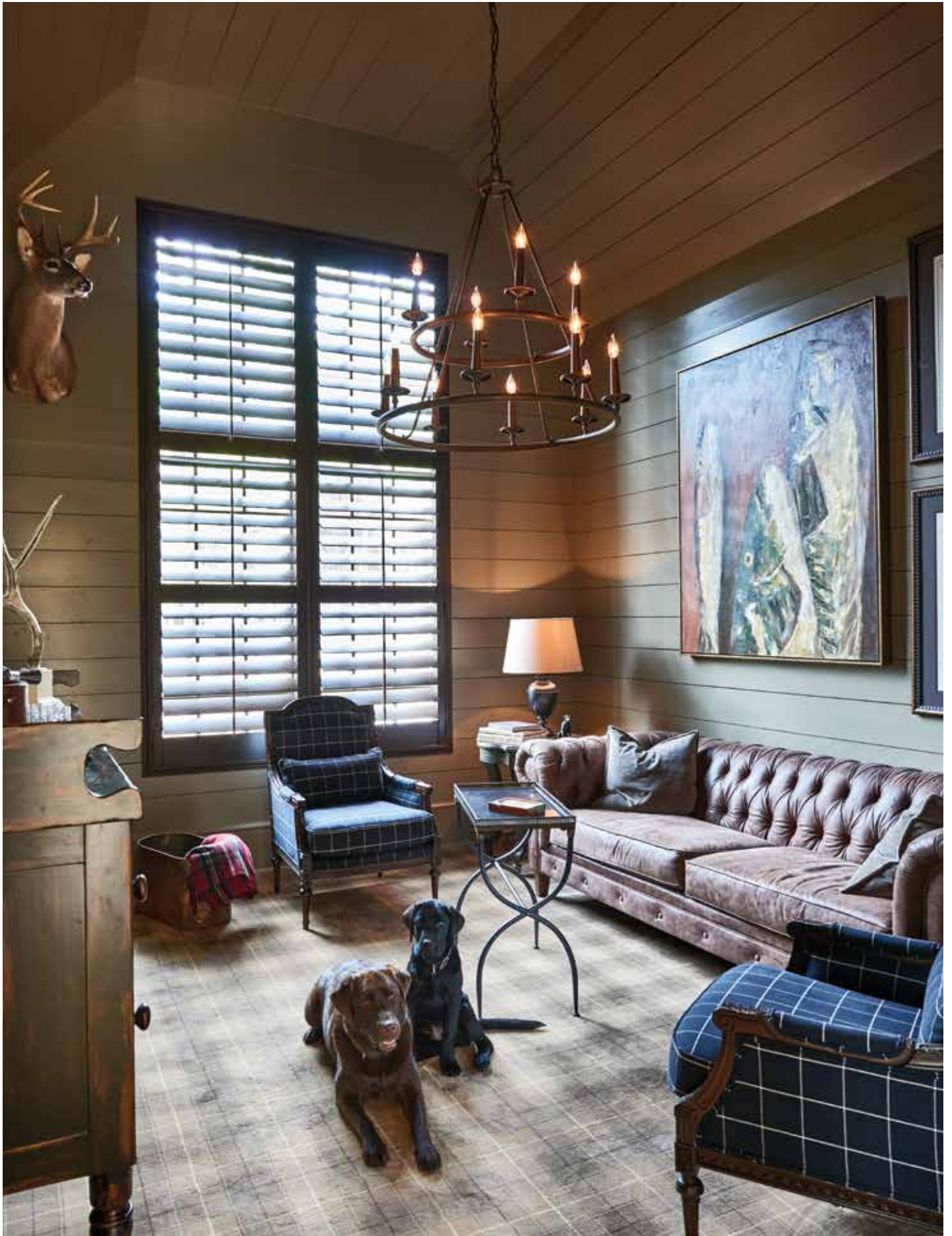
“We like to call it ‘livable luxury’ – the home is full of very high-end, upscale details, yet it retains the warmth of a casual countryside home beckoning you to kick off your shoes, bring in the dogs and kids and just relax and live,” says Ludemann.

Ludemann designed two of the bedrooms for children; one in neutral tones with an outdoorsy boy in mind, the other – warm pink with twin beds for little girls. “In many ways, the home was reflective of our own young, active family – Troy and myself, our











“Truly, the home was inspired by a British country home with the casual sophistication reflective of the British countryside. It’s that classic design with a twist for which we’re known.”

son, daughter and our two labs, Briar and Bramble,” offers Ludemann.

The design was a hit and the home won the October 2015 ‘Houzz Tour’ award. All of the art featured in the home were original pieces done by local artists, which were later auctioned by Charlotte’s Anne Nielsen Fine Art Gallery to benefit Big Brothers and Big Sisters (BBBS) local chapter.

“The home was turned into the Big Brothers and Big Sisters Charity Home, where we held an online auction for all the art and furnishings and were able to raise over \$25,000 for this incredible group and worthy cause,” said Ludemann. This little Welsh House has made countless people happy from the inside out. ♦

